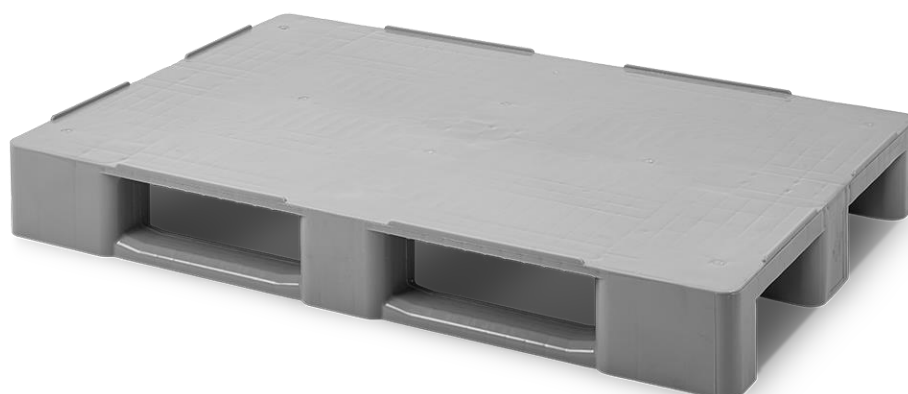
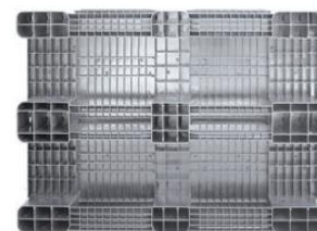


PALLET 1200x800, CLOSED DECK, 3 RUNNERS

Rev. 15-1-21

Ref. no. **C1C**



CONGOST presents a compact pallet which is made from food certified HDPE material. Its structure makes it easy to clean. The retaining edges allow a safe load and transport of the empty pallets. Compatible with automated logistic systems.

COMPOSITION:

Material:	HDPE
Quality:	Food certified

WEIGHT AND VOLUME:

Weight:	12,600 kg
Capacity:	--

EXTERNAL DIMENSIONS (mm) (+/-1%):

Length:	1200
Width:	800
Height:	145

OTHER DIMENSIONS (mm) (+/-1%):

Long side:	
Distance between feet:	315
End foot width:	210
Centre foot width:	150
Short side:	
Distance between feet:	225
End foot width:	100
Centre foot width:	150

NESTABLE AND STACKABLE FEATURES:

Nestable:	No
Nestable area:	--
Non-nestable area:	--
Stackable:	Yes
Height when stacked:	

OTHER CHARACTERISTICS:

Surface:	Closed
Surface perforations:	
Thickness:	
Support surface:	3 runners
Rims:	7 mm
Reinforcements:	No
Temperature resistance:	from -20°C up to +60°C
Colours:	Grey
Units/pallet:	15
Marking by thermal printing:	Optional
RFID:	No

LOAD CAPACITY:

dynamic:	up to 1000 kg
static:	up to 4000 kg
on rack:	up to 500 kg

