

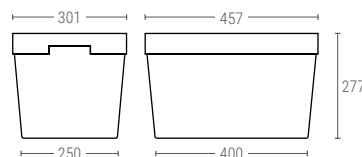
» NESTABLE DISTRIBUTION CONTAINERS



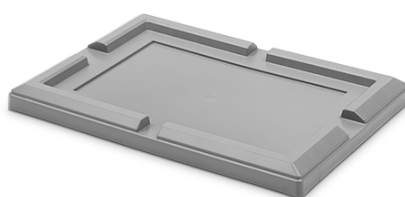
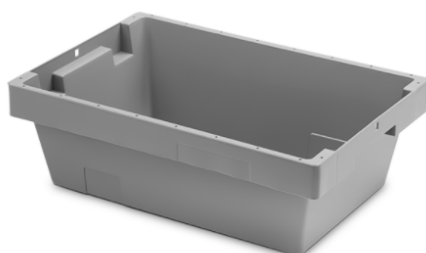
493328 | SOLID NESTABLE DISTRIBUTION CONTAINER WITH CLOSED HANDLES

Ext. dimensions	L.490; W.330; h.280 mm
Dimensions base ext.	L.405; W.255 mm
Weight	1,260 kg
Capacity	35 liter
Color	○
Material	PPCOP
Units per pallet	228

Internal dimensions (mm)



- Containers **493328** and **493026** are suitable for distribution, thanks to the optimal use of their volume and savings in return transport as they are nestable.
- Container **493021** is specially designed for use in automated warehouses.
- These containers are ideal for use with barcodes and label/logo.
- Lids **493300** and **493000** can have an opening to allow documentation to be entered during the distribution process.

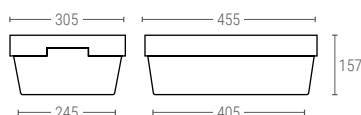


493316

SOLID NESTABLE DISTRIBUTION CONTAINER WITH CLOSED HANDLES

Ext. dimensions	L.490; W.330; h.160 mm
Dimensions base ext.	L.410; W.256 mm
Peso	0,960 kg.
Capacity	17 liter
Color	○
Material	PPCOP
Units per pallet	266

Internal dimensions (mm)



493300

LID FOR REF. 493328 AND 493316

Ext. dimensions	L.500; W.340; h.42 mm
Weight	0,565 kg
Color	○
Material	PPCOP

493300P

LID WITH LATCH FOR REF. 493328 AND 493316

Ext. dimensions	L.500; W.340; h.42 mm
Weight	0,570 kg
Color	○
Material	PPCOP

i Lid with a latch Ref. **493300P** that ensures the closure of the lid without having to use adhesive strips or seals.