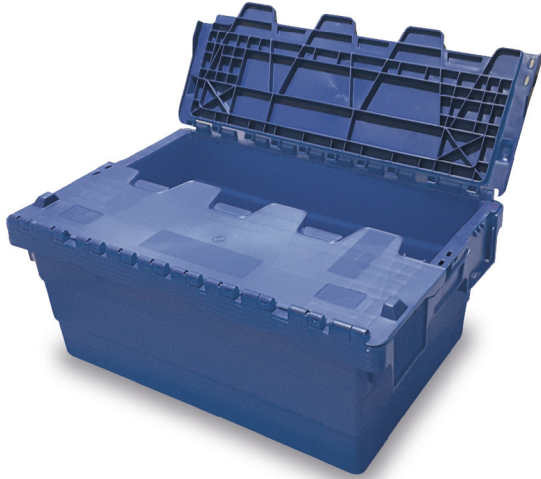


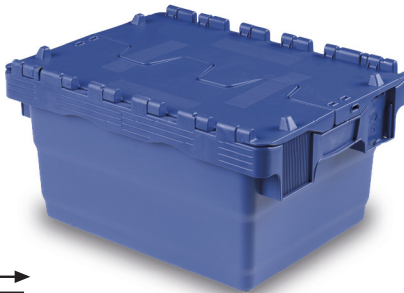
NESTABLE CONTAINERS WITH INTEGRATED LID



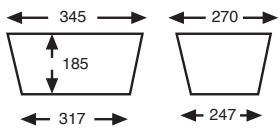
- Wide range of stackable containers with integrated lid for an optimized management of the handling units.
- Stackable up to 75% with a total opening of the covers for a great space saving. (4 piles container 600x400 mm for 1000x1200 mm pallet).
- Multiple marking and labeling areas for easy identification.
- Security system available for transport with total security.

3021 NESTABLE SOLID CONTAINER WITH INTEGRATED LID

External Dimensions		Base External Dimensions		Weight
L.400; W.300; h.200 mm.		L.325; W.255 mm.		1.350 kg.
Capacity	Color	Material	Un. Pallet	
16 liters	■	PP	279	

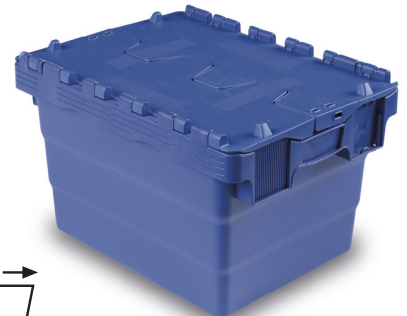


Internal Dimensions (mm.)

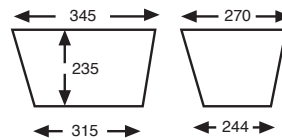


3025 NESTABLE SOLID CONTAINER WITH INTEGRATED LID

External Dimensions		Base External Dimensions		Weight
L.400; W.300; h.250 mm.		L.323; W.252 mm.		1.450 kg.
Capacity	Color	Material	Un. Pallet	
21 liters	■	PP	270	



Internal Dimensions (mm.)

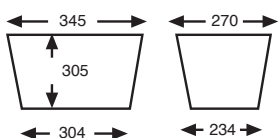


3032 NESTABLE SOLID CONTAINER WITH INTEGRATED LID

External Dimensions		Base External Dimensions		Weight
L.400; W.300; h.320 mm.		L.312; W.242 mm.		1.570 kg.
Capacity	Color	Material	Un. Pallet	
27 liters	■	PP	261	



Internal Dimensions (mm.)



3036 NESTABLE SOLID CONTAINER WITH INTEGRATED LID

External Dimensions		Base External Dimensions		Weight
L.400; W.300; h.360 mm.		L.310; W.240 mm.		1.650 kg.
Capacity	Color	Material	Un. Pallet	
31 liters	■	PP	252	



Internal Dimensions (mm.)

