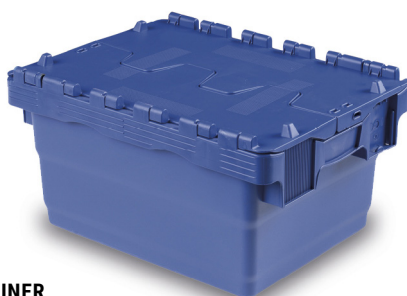
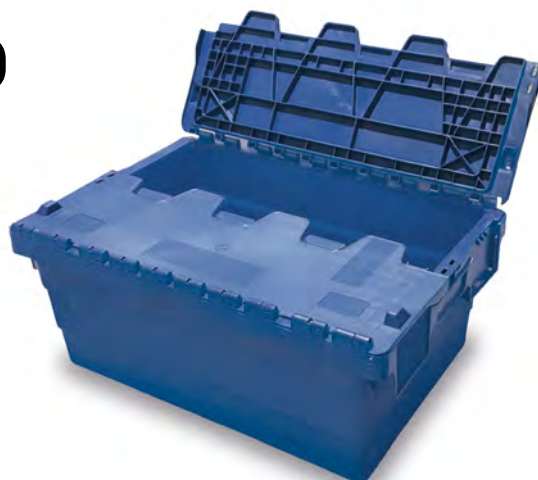


» NESTABLE ATTACHED LID CONTAINERS

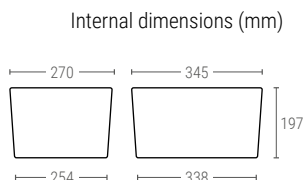
- Wide range of nestable containers with integrated lid for an optimized management of the handling units.
- Multiple marking and labelling areas for easy identification.
- Stackable up to 75% with a total opening of the covers for a great space saving. (4 piles container 600x400 mm for 1000x1200 mm pallet).
- Security system available for transport with total security.



3022

ATTACHED LID CONTAINER

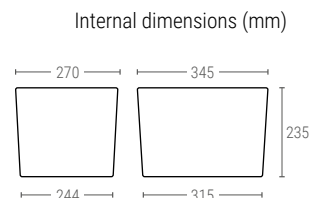
Ext. dimensions L.400; W.300; h.222 mm
 Dimensions base ext. L.338; W.254 mm
 Weight 1,500 kg
 Capacity 18 liter
 Color ●
 Material PP
 Units per pallet 279



3025

ATTACHED LID CONTAINER

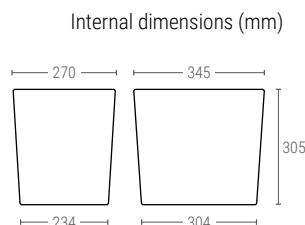
Ext. dimensions L.400; W.300; h.250 mm
 Dimensions base ext. L.323; A.252 mm
 Weight 1,450 kg
 Capacity 21 liter
 Color ●
 Material PP
 Units per pallet 270



3032

ATTACHED LID CONTAINER

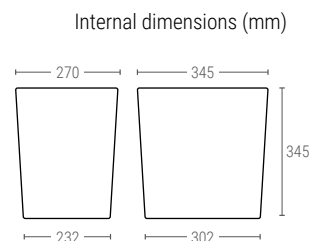
Ext. dimensions L.400; W.300; h.320 mm
 Dimensions base ext. L.312; W.242 mm
 Weight 1,570 kg
 Capacity 27 liter
 Color ●
 Material PP
 Units per pallet 261



3036

ATTACHED LID CONTAINER

Ext. dimensions L.400; W.300; h.360 mm
 Dimensions base ext. L.310; W.240 mm
 Weight 1,650 kg
 Capacity 31 liter
 Color ●
 Material PP
 Units per pallet 252



STACKABLE CONTAINERS

STACK AND NEST CONTAINERS

DOLLIES

CONTAINERS AND TANKS

PALLETS

OTHER ITEMS

WASTE CONTAINERS

PLASTIC BARRIERS