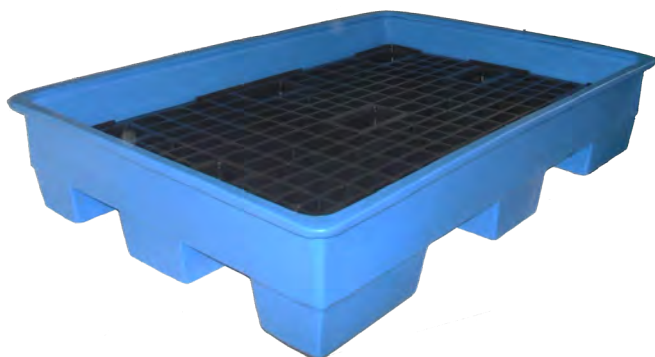


» SPILL PALLETS

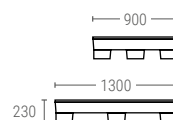


5002100

SPILL PALLET

Ext. dimensions	L.1300, W.900, h.230 mm
Weight	11 kg
Capacity	150 liter
Color	
Material	LLDPE

Internal dimensions (mm)

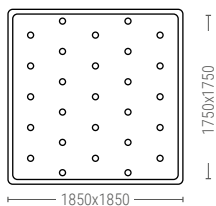
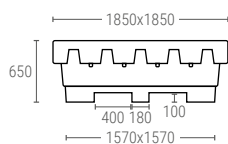


5102100

SPILL PALLET

Ext. dimensions	L.1850, W.1750, h.650 mm
Weight	72 kg
Capacity	1000 liter
Color	
Material	LLDPE

Internal dimensions (mm)



- The spill pallet is made of **rotomoulded polyethylene**.
- Very **resistant** to corrosion and heavy conditions
- The spill pallet is designed to store **corrosive liquids**.
- It **protects** from possible spills to the floors, people, and facilities under current legislation.

- **Supports all types of packaging** in plastic, metal, containers GRG up to 1000 L, drums...
- It is **stackable** with each other, allowing to reduce storage and transport space.
- The rigid spill tray **supports metallic GRG containers**.