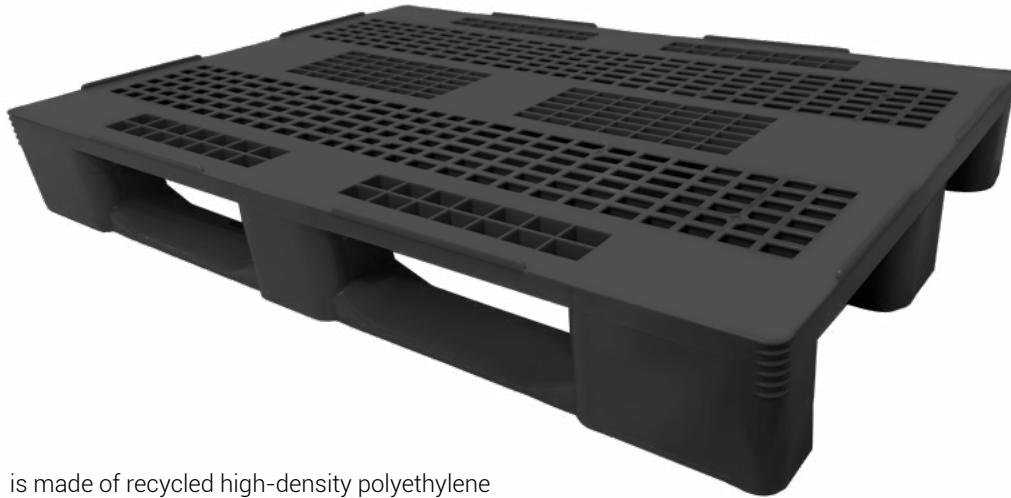



» PALLET ECO C1



Pallet ECO C1 is made of recycled high-density polyethylene (HDPE), obtaining great resistance and durability.

The runners provide a safe and easy handling process with pallet trucks and forklifts.

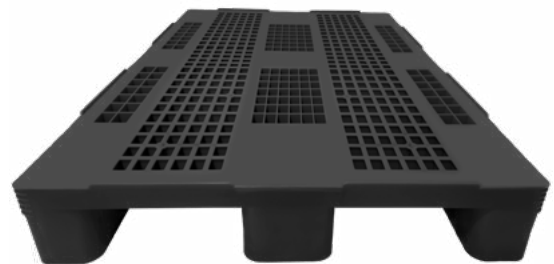
Thanks to its monoblock structure, it is stable and easy to clean.

 Can be provided with hot printed logo.

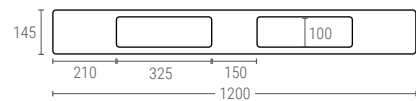
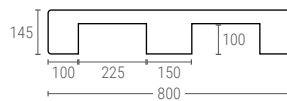
ECO C1

PALLET ECO C1

Support surface	3 runners
Ext. dimensions	L.1200, W.800, h.145 mm
Weight	13,750 kg
Color	●
Material	Recycled HDPE
Dynamic load	up to 1000 kg
Static load	up to 5000 kg
Racking load	up to 500 kg



Internal dimensions(mm)



➤ Reinforced corners with grooves designed to facilitate film shrink-wrapping.

➤ Perforated surface to facilitate its cleaning.

➤ Outer rims of 7 mm to provide safe handling applications.