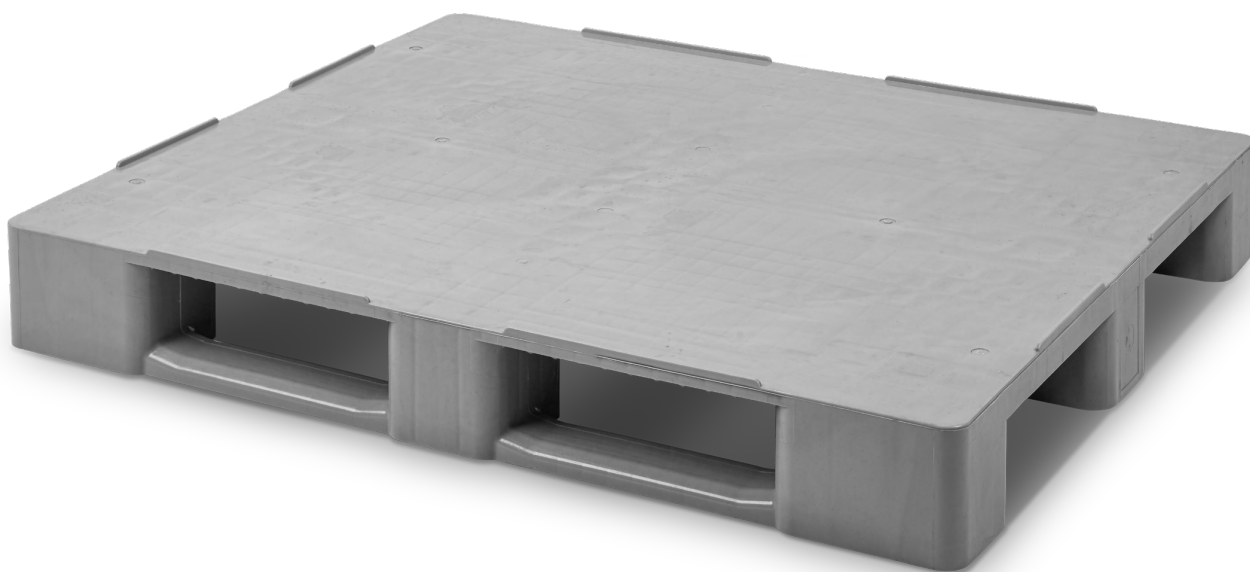


» CLOSED DECK PALLET C3C



STACKABLE
CONTAINERS

STACK AND NEST
CONTAINERS

DOLLIES

CONTAINERS
AND TANKS

PALLETS

OTHER ITEMS

WASTE
CONTAINERS

PLASTIC
BARRIERS

C3C

CLOSED DECK PALLET C3C

Support surface	3 runners
Ext. dimensions	L.1200, W.1000, h.145 mm
Weight	14,500 kg
Color	○
Material	HDPE
Dynamic load	up to 1000 kg
Static load	up to 4000 kg

C3C-3R

PALLET C3C WITH 3 INTERNAL METAL REINFORCEMENTS

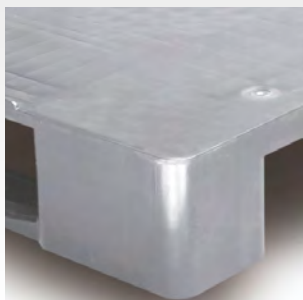
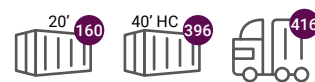
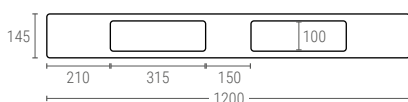
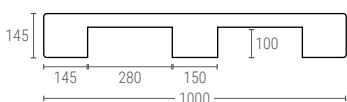
Weight	16,600 kg
Dynamic load	up to 1250 kg
Static load	up to 5000 kg
Racking load	up to 1000 kg

C3C-4R

PALLET C3C WITH 4 INTERNAL METAL REINFORCEMENTS

Weight	17,300 kg
Dynamic load	up to 1500 kg
Static load	up to 5000 kg
Racking load	up to 1250 kg

Internal dimensions (mm)



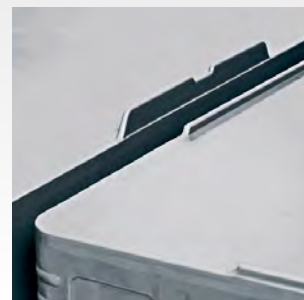
➤ Rounded corners for an easy handling and high impact resistance.



➤ Can be supplied with outer rims.



➤ Monoblock design for a major resistance



➤ Outer rims from 7 to 22 mm, upon request, to provide safe handling applications.