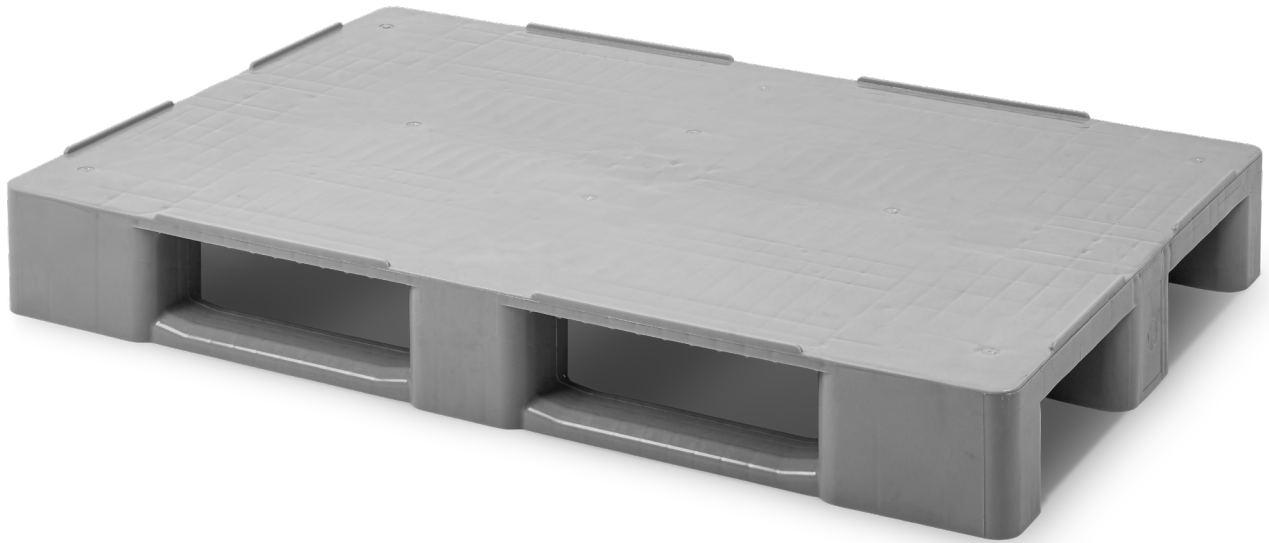


» CLOSED DECK PALLET C1C



C1C

CLOSED DECK PALLET C1C

Support surface	3 runners
Ext. dimensions	L.1200, W.800, h.145 mm
Weight	12,600 kg.
Color	●
Material	HDPE
Dynamic load	up to 1000 kg
Static load	up to 4000 kg

C1C-3R

PALLET C1C WITH 3 INTERNAL METAL REINFORCEMENTS

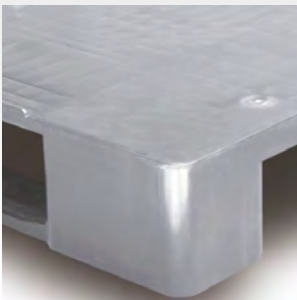
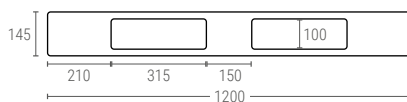
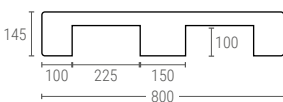
Weight	14,700 kg
Dynamic load	up to 1250 kg
Static load	up to 5000 kg
Racking load	up to 1000 kg

C1C-4R

PALLET C1C WITH 4 INTERNAL METAL REINFORCEMENTS

Weight	15,400 kg
Dynamic load	up to 1500 kg
Static load	up to 5000 kg
Racking load	up to 1250 kg

Internal dimensions (mm)



➤ Rounded corners for an easy handling and high impact resistance.



➤ Can be supplied with outer rims.



➤ Monobloc design for a major resistance



➤ Outer rims from 7 to 22 mm, upon request, to provide safe handling applications.