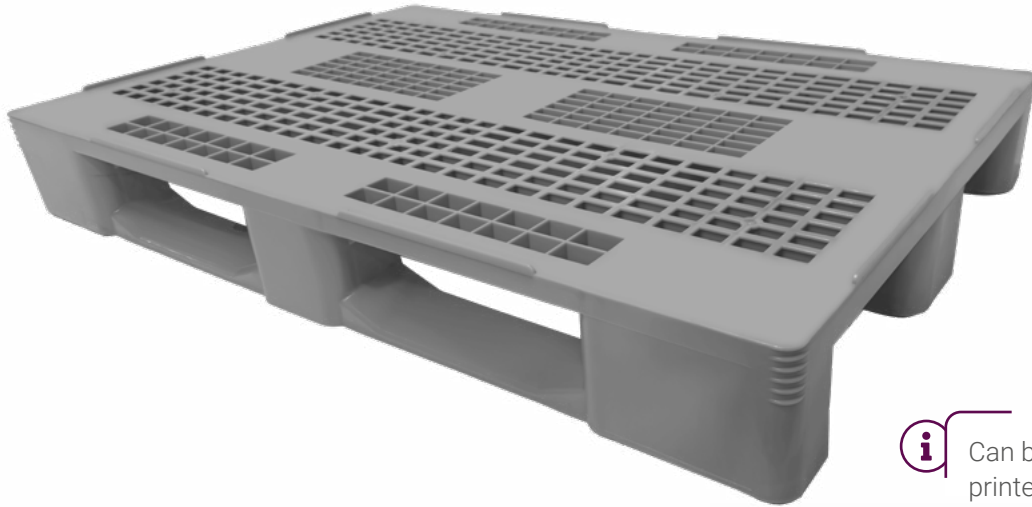


» PALLET C1

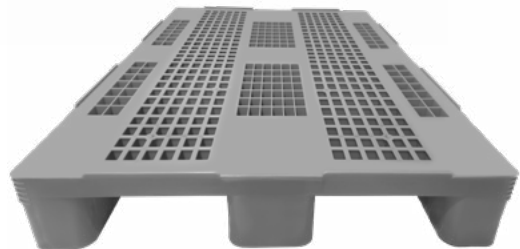


i Can be provided with hot printed logo.

Pallet C1 is made of food grade high-density polyethylene (HDPE), ensuring compliance with current sanitary standards.

The tapered design of the runners facilitates handling with pallet trucks and forklifts.

Their design ensures easy cleaning and a thermal resistance range from -40°C to +70°C.



C1

PALLET C1

Support surface	3 runners
Ext. dimensions	L.1200, W.800, h.145 mm
Weight	13,75 kg.
Color	●
Material	HDPE
Dynamic load	up to 1.000 kg
Static load	up to 5.000 kg
Racking load	up to 500 kg

C1-3R

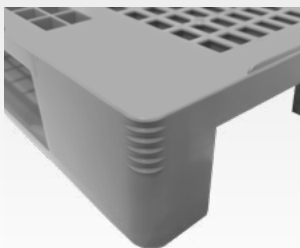
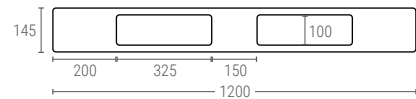
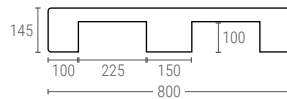
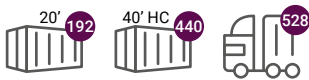
PALLET C1 WITH 3 INTERNAL METAL REINFORCEMENTS

Weight	13,5 kg.
Dynamic load	up to 1.250 kg
Static load	5.000 kg.
Racking load	1.000 kg.

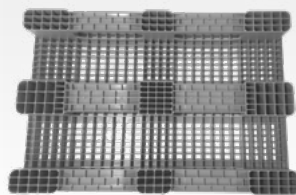
C1-4R

PALLET C1 WITH 4 INTERNAL METAL REINFORCEMENTS

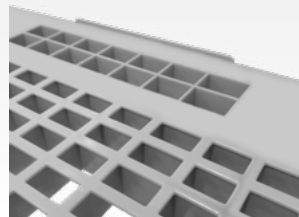
Weight	14,2 kg.
Dynamic load	up to 1.500 kg
Static load	5.000 kg.
Racking load	1.250 kg.



➤ Reinforced corners with grooves designed for easy stretch wrapping.



➤ Perforated surface to facilitate its cleaning.



➤ Standard 7 mm safety rims for enhanced load security.



➤ Possibility to insert 3 or 4 metal reinforcements for a major load capacity in rack up to 1250 kg.