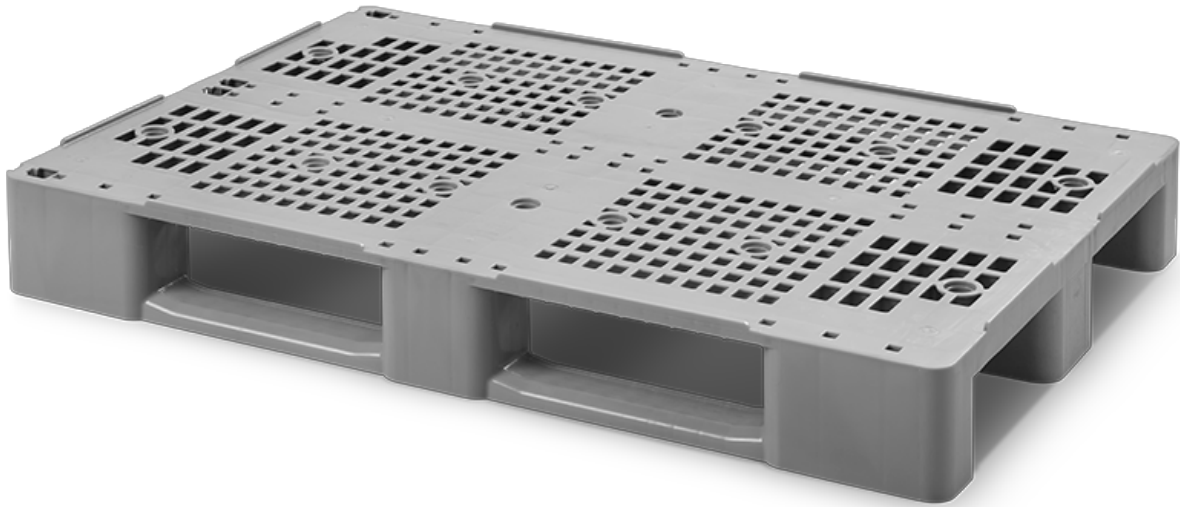


» PALLET C1



Pallet C1 is made of food grade high-density polyethylene (HDPE), guaranteeing current sanitary requirements.

The runners provide a safe and easy handling process with pallet trucks and forklifts.

Thanks to its monoblock structure, it is stable and easy to clean. Resistant to temperatures from -40°C to + 70°C.

i Can be provided with hot printed logo.

C1

PALLET C1

Support surface	3 runners
Ext. dimensions	L.1200, W.800, h.145 mm
Weight	11,6 kg
Color	○
Material	HDPE
Dynamic load	up to 1000 kg
Static load	up to 4000 kg

C1-3R

PALLET C1 WITH 3 INTERNAL METAL REINFORCEMENTS

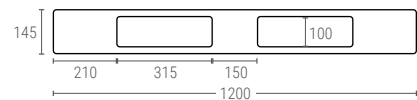
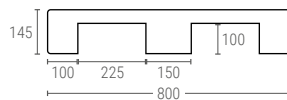
Weight	13,5 kg
Dynamic load	1250 kg
Static load	5000 kg
Racking load	1000 kg

C1-4R

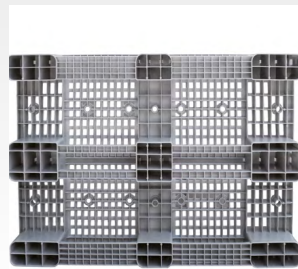
PALLET C1 WITH 4 INTERNAL METAL REINFORCEMENTS

Weight	14,2 kg
Dynamic load	1500 kg
Static load	5000 kg
Racking load	1250 kg

Internal dimensions (mm)



➤ Possibility to insert 3 or 4 metal reinforcements for a major load capacity in rack up to 1250 kg.



➤ Perforated surface to facilitate its cleaning.



➤ Outer rims from 7 to 22 mm, upon request, to provide safe handling applications.