

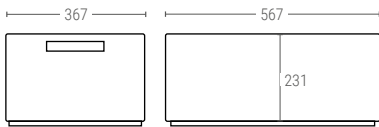


6423 | SOLID CONTAINER WITH OPEN HANDLES

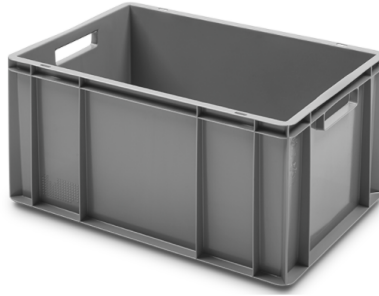
Ext. dimensions L.600; W.400; h.235 mm
 Weight 2,300 kg
 Capacity 45 liter
 Color ○○
 Material HDPE
 Units per pallet 40

6423B | WITH CLOSED HANDLES

Internal dimensions (mm)



➤ Version closed handles Ref. **6432B**

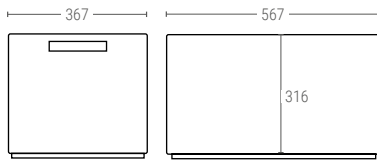


6432 | SOLID CONTAINER WITH OPEN HANDLES

Ext. dimensions L.600; W.400; h.320 mm
 Weight 2,860 kg
 Capacity 63 liter
 Color ○○
 Material HDPE
 Units per pallet 28/36

6432B | WITH CLOSED HANDLES

Internal dimensions (mm)



3270 | LID FOR CONTAINERS 600X400 MM

Ext. dimensions L.600; W.400 mm
 Weight 0,850 kg
 Color ○○
 Material HDPE

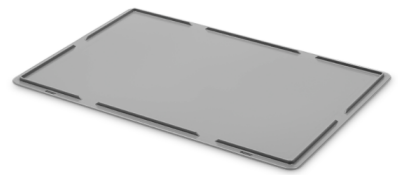
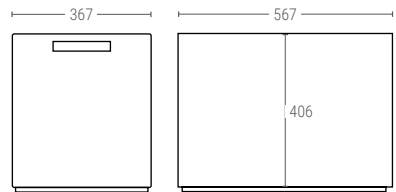


6441 | SOLID CONTAINER WITH OPEN HANDLES

Ext. dimensions L.600; W.400; h.410 mm
 Weight 3,465 kg
 Capacity 80 liter
 Color ○○
 Material HDPE
 Units per pallet 20

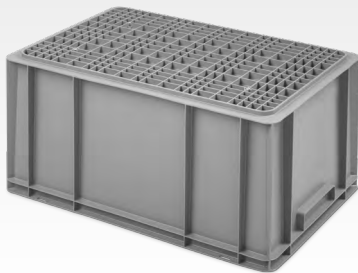
6441B | WITH CLOSED HANDLES

Internal dimensions (mm)



6400 | LID FOR CONTAINERS 600X400 MM

Ext. dimensions L.600; W.400 mm
 Weight 0,815 kg
 Color ○○
 Material HDPE



REINFORCED BOTTOM

Reinforced bottom allows up to 50 kg of loading, with a 1 mm flexion of the base. Ideal for automated conveyor systems.

6423R | SOLID CONTAINER WITH REINFORCED BOTTOM

Ext. dimensions L.600; W.400; h.235 mm
 Weight 2,600 kg
 Material PPCOP
 Units per pallet 40

6432R | SOLID CONTAINER WITH REINFORCED BOTTOM

Ext. dimensions L.600; W.400; h.320 mm
 Weight 3,160 kg
 Material PPCOP
 Units per pallet 28/36

6441R | SOLID CONTAINER WITH REINFORCED BOTTOM

Ext. dimensions L.600; W.400; h.410 mm
 Weight 3,700 kg
 Material PPCOP
 Units per pallet 20