

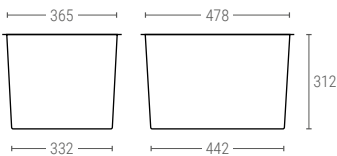


2501

STACK AND NEST SOLID CONTAINER WITH OPEN HANDLES

Ext. dimensions	L.600; W.400; h.320 mm
Weight	2,290 kg
Capacity	55 liter
Color	●
Material	HDPE
Units per pallet	140

Internal dimensions (mm)

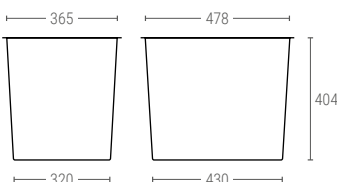


2601

STACK AND NEST SOLID CONTAINER WITH OPEN HANDLES

Ext. dimensions	L.600; A.400; h.410 mm
Weight	2,790 kg
Capacity	69 liter
Color	●
Material	HDPE
Units per pallet	100

Internal dimensions (mm)

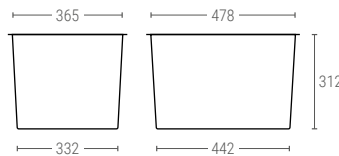


2502

STACK AND NEST CONTAINER WITH PERFORATED WALLS AND SOLID BASE, OPEN HANDLES

Ext. dimensions	L.600; W.400; h.320 mm
Weight	2,050 kg
Capacity	55 liter
Color	●
Material	HDPE
Units per pallet	140

Internal dimensions (mm)

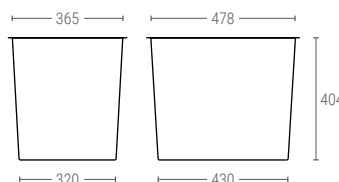


2602

STACK AND NEST CONTAINER WITH PERFORATED WALLS AND SOLID BASE, OPEN HANDLES

Ext. dimensions	L.600; W.400; h.410 mm
Weight	2,530 kg.
Capacity	69 liter
Color	●
Material	HDPE
Units per pallet	100

Internal dimensions (mm)

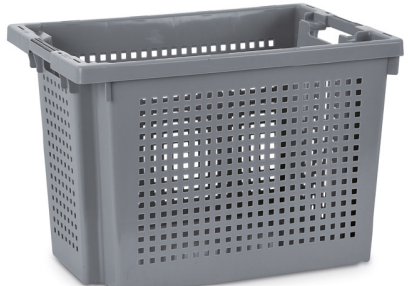
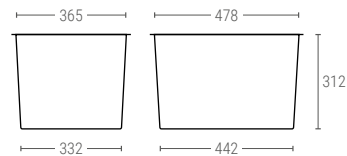


2503

STACK AND NEST PERFORATED CONTAINER WITH OPEN HANDLES

Ext. dimensions	L.600; W.400; h.320 mm
Weight	1,960 kg
Capacity	55 liter
Color	●
Material	HDPE
Units per pallet	140

Internal dimensions (mm)

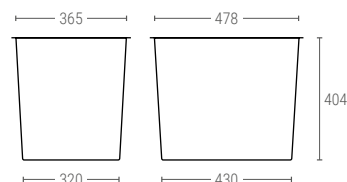


2603

STACK AND NEST PERFORATED CONTAINER WITH OPEN HANDLES

Ext. dimensions	L.600; W.400; h.410 mm
Weight	2,375 kg
Capacity	69 liter
Color	●
Material	HDPE
Units per pallet	100

Internal dimensions (mm)



2064

LID FOR REF. 2201 TO 2603

Ext. dimensions	L.600; W.400 mm
Weight	0,500 kg
Color	●
Material	PP

