

# » DISTRIBUTION CONTAINERS

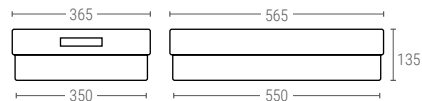
Euro Size 600x400 mm



## 60406 | STACKABLE AND NESTABLE SOLID CONTAINER WITH OPEN HANDLES

Ext. dimensions L.600; W.400; h.150 mm  
 Weight 1,725 kg  
 Capacity 30 liter  
 Color ○○  
 Material HDPE  
 Units per pallet 108

Internal dimensions (mm)



STACKABLE CONTAINERS

STACK AND NEST CONTAINERS

DOLLIES

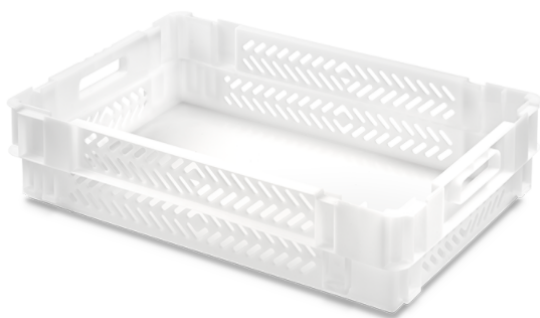
CONTAINERS AND TANKS

PALLETS

OTHER ITEMS

WASTE CONTAINERS

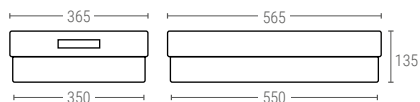
PLASTIC BARRIERS



## 60407 | STACKABLE AND NESTABLE CONTAINER WITH PERFORATED WALLS AND SOLID BASE, OPEN HANDLES

Ext. dimensions L.600; W.400; h.150 mm  
 Weight 1,615 kg  
 Capacity 30 liter  
 Color ○○  
 Material HDPE  
 Units per pallet 108

Internal dimensions (mm)



## 60408 | STACKABLE AND NESTABLE PERFORATED CONTAINER WITH OPEN HANDLES

Ext. dimensions L.600; W.400; h.150 mm  
 Weight 1,600 kg  
 Capacity 30 liter  
 Color ○○  
 Material HDPE  
 Units per pallet 108

Internal dimensions (mm)

