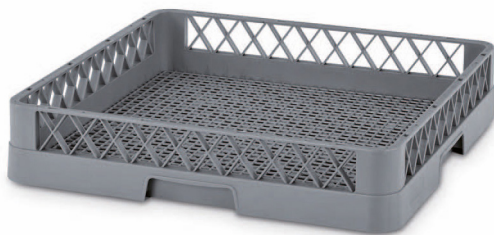


# CONRACK - PLATES AND EXTENSIONS FOR DISHES

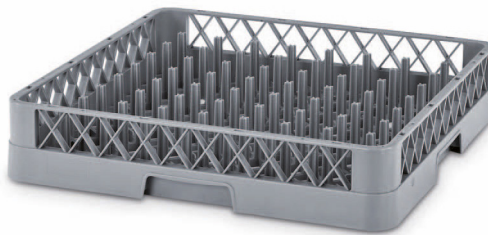
## 9100 SIMPLE PLATE RACK

External Dimensions	Stacking height:	Net opening	Weight	Un. Pallet
L.500; W.500; h.102 mm.	94 mm.	9.8 mm.	1.220 kg.	100



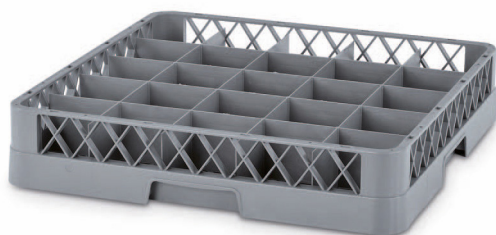
## 9101 PLATE RACK FOR DISHES

External Dimensions	Stacking height:	Plate capacity	Weight	Un. Pallet
L.500; W.500; h.102 mm.	94 mm.	18	1.300 kg.	100



## 9125 PLATE RACK WITH 25 COMPARTMENTS

External Dimensions	Stacking height:	Cell dimensions	Weight	Un. Pallet
L.500; W.500; h.102 mm.	94 mm.	92x92x75 mm.	1.550 kg.	100



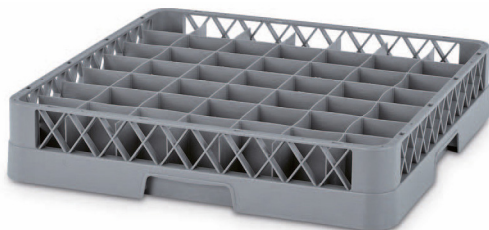
## 9136 PLATE RACK WITH 36 COMPARTMENTS

External Dimensions	Stacking height:	Cell dimensions	Weight	Un. Pallet
L.500; W.500; h.102 mm.	94 mm.	76x76x75 mm.	1.670 kg.	100



## 9149 PLATE RACK WITH 49 COMPARTMENTS

External Dimensions	Stacking height:	Cell dimensions	Weight	Un. Pallet
L.500; W.500; h.102 mm.	94 mm.	65x65x75 mm.	1.820 kg.	100



## 9200 EXTENSION RACK

External Dimensions	Height increase	Weight	Un. Pallet
L.500; W.500; h.40 mm.	40 mm.	0.460 kg.	200



## 9225 EXTENSION RACK 25 COMPARTMENTS

External Dimensions	Stacking height:	Cell dimensions	Weight	Un. Pallet
L.500; W.500; h.50 mm.	94 mm.	91x91x40 mm.	0.740 kg.	200



## 9236 EXTENSION RACK 36 COMPARTMENTS

External Dimensions	Stacking height:	Cell dimensions	Weight	Un. Pallet
L.500; W.500; h.50 mm.	94 mm.	75x75x40 mm.	0.810 kg.	200



## 9249 EXTENSION RACK 49 COMPARTMENTS

External Dimensions	Stacking height:	Cell dimensions	Weight	Un. Pallet
L.500; W.500; h.50 mm.	94 mm.	64x64x38 mm.	0.890 kg.	200



## 9000 KIT FOR PERMANENT JOINT

