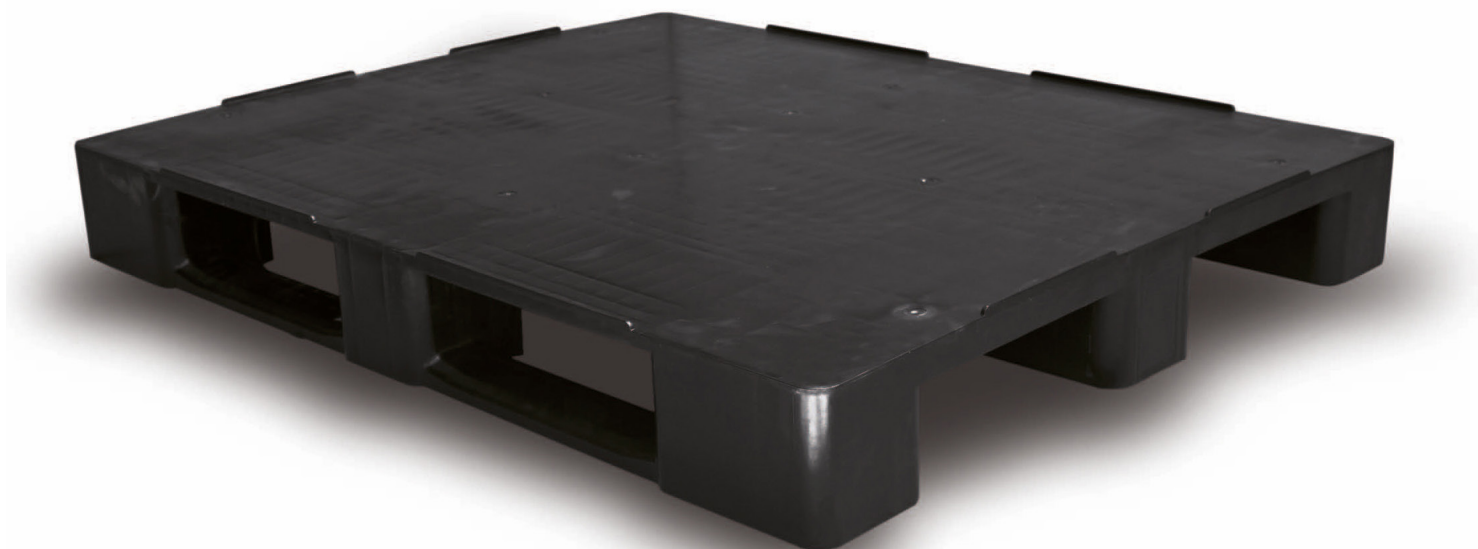


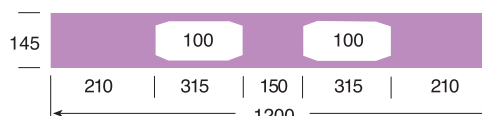
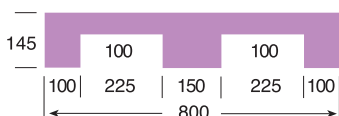
CLOSED DECK PALLET ECO C1C AND ECO C3C

1200 x 800 mm.
1200 x 1000 mm.



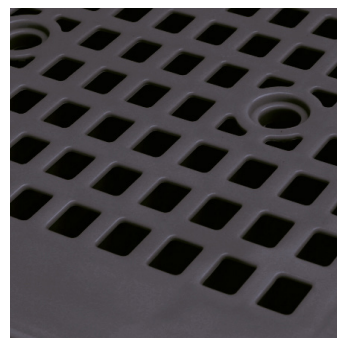
ECO C1C PALLET ECO C1C

Support surface	Dimensions	Weight	Color	Material	Dynamic load	Static load	Racking load
3 runners	L.1200; W.800; h.145 mm.	12.600 kg.	■	HDPE recycled	1000 kg.	4000 kg.	500 kg.



ECO C1C-3R PALLET ECO C1C WITH 3 METAL REINFORCEMENTS

Weight	Dynamic load	Static load	Racking load
14.700 kg.	1250 kg.	5000 kg.	1000 kg.

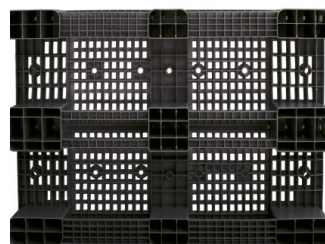


Possibility to insert 3 or 4 metal reinforcements for a major load capacity in rack up to 1250 kg.

Optional anti-slip plugs available for a safe transport.

ECO C1C-4R PALLET ECO C1C WITH 4 INTERNAL METAL REINFORCEMENTS

Weight	Dynamic load	Static load	Racking load
15.400 kg.	1500 kg.	5000 kg.	1250 kg.



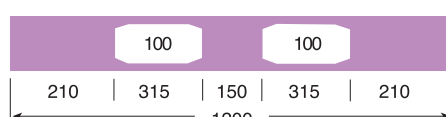
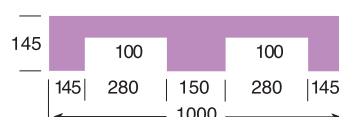
Perforated surface for easy handling and cleaning.



Standard rims of 7 mm. on the deck and optional of 22 mm. inside and outside the deck for a better safety of the load.

ECO C3C PALLET ECO C3C

Support surface	Dimensions	Weight	Color	Material	Dynamic load	Static load	Racking load
3 runners	L.1200; W.1000; h.145 mm.	14.500 kg.	■	HDPE recycled	1000 kg.	4000 kg.	500 kg.



ECO C3C-3R PALLET ECO C3C WITH 3 INTERNAL METAL REINFORCEMENTS

Weight	Dynamic load	Static load	Racking load
16.600 kg.	1250 kg.	5000 kg.	1000 kg.

ECO C3C-4R PALLET ECO C3C WITH 4 INTERNAL METAL REINFORCEMENTS

Weight	Dynamic load	Static load	Racking load
17.300 kg.	1500 kg.	5000 kg.	1250 kg.